

PHYSICIAN REFERRAL

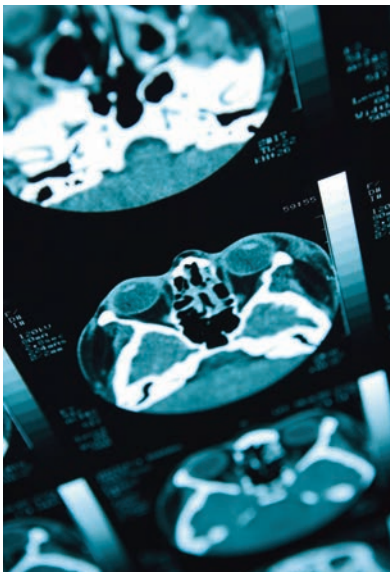
Call UK•MDs 800-888-5533

Fax 859-257-6325

PATIENT APPOINTMENTS

Call 859-323-9729 (XRAY)

Fax 859-257-1969



M. ELIZABETH OATES, MD

Chair

The Department of Radiology provides state-of-the-art diagnostic imaging services for patients using computed tomography (CT), magnetic resonance imaging (MRI), nuclear medicine including radionuclide imaging and positron emission tomography (PET), ultrasonography (US), and conventional fluoroscopy and radiography (X-ray). The Department also performs a wide variety of therapeutic interventional procedures employing advanced image-guided techniques.

Specialized Imaging Technology— Diagnostic Radiology

Computed Tomography (CT)

- CT fluoroscopy
- 128-slice dual-energy CT scanner
- Wide-bore CT scanner

Dual-Energy Absorptiometry (DEXA, DXA)

- Bone mineral density of lumbar spine, hip and forearm

Magnetic Resonance Imaging (MRI)

- 1.5T open-bore MRI scanner (for patients up to 550 pounds, 28 inches girth)
- 3T MRI scanner

Mammography

- Digital mammography
- Tomosynthesis

Nuclear Medicine & Molecular Imaging

- Gamma cameras with single photon emission computed tomography (SPECT)
- Positron emission tomography/computed tomography (PET/CT)

Ultrasonography (US)

- Real-time with color Doppler
- Breast elastography
- Liver elastography

Fluoroscopy/X-ray

- Single-plane and bi-plane fluoroscopy
- Digital X-ray

Specialized Imaging Services— Interventional Radiology

Bone and Joints

- Arthrograms (MRI, X-ray), aspirations and biopsies, joint injections (e.g., steroids)

Brain and Spine

- Cerebral aneurysms/arteriovenous malformations (AVMs)
- Kyphoplasty/vertebroplasty

Breast

- Biopsies (stereotactic, MR-guided, ultrasound-guided)

Chest, Abdomen and Pelvis

- Aspirations and biopsies
- Chemoembolization and radioembolization
- Cryoablation and radiofrequency ablation
- Drainages

RADIOLOGY

DIVISIONS

Abdominal Radiology

- CT, MRI, US and Fluoroscopy/X-ray of gastrointestinal tract and genitourinary tract

Cardiovascular and Thoracic Radiology

- CT, MRI and Fluoroscopy/X-ray of heart, blood vessels and lungs

Emergency Radiology

- CT, MRI, US and X-ray of entire body

Medical Physics

- Medical physics support for safe and effective use of radiation-producing imaging technology

Musculoskeletal Radiology

- CT, MRI, US and Fluoroscopy/X-ray for diagnosis and intervention (e.g., biopsy, aspiration) of bones and joints

Neuroradiology

- CT and MRI of brain, head and neck, and spine; interventions (e.g., aneurysms, arteriovenous malformations (AVMs), kyphoplasty)

Nuclear Medicine & Molecular Imaging

- Gamma camera imaging and PET/CT of entire body; radionuclide therapies (oral and parenteral)

Pediatric Radiology

- CT, MRI, US and Fluoroscopy/X-ray of neonates, infants and children

Vascular & Interventional Radiology

- Full range of vascular and non-vascular procedures for diagnosis (e.g., biopsy) and therapy (e.g., chemoembolization, radiofrequency ablation)

Women's Radiology

- Mammography, MRI and US of breasts for diagnosis and interventions (e.g., biopsy)

PHYSICIANS

Abdominal Radiology

Andres R. Ayoob, MD
Adrian A. Dawkins, MD
Halemane S. Ganesh, MD
James T. Lee, MD
Arthur Lieber, MD

Rashmi T. Nair, MD
Joseph W. Owen, MD
Scott D. Stevens, MD

Cardiovascular and Thoracic Radiology

Michael A. Brooks, MD
Stephen B. Hobbs, MD
Conor M. Lowry, MD
Michael A. Winkler, MD, FSCCT, FICA
Marianna Zagurovskaya, MD

Emergency Radiology

Gary L. Merhar, MD, FACR
David J. Nickels, MD, MBA
Barbara Pawley, MD
Miguel A. Pereira Rodriguez, MD
Jeremy W. Thacker, MD

Jennifer F. True, MD
Charl S. Van Wyk, MD

Musculoskeletal Radiology

Francesca D. Beaman, MD
Justin R. Montgomery, MD
Paul J. Spicer, MD

Neuroradiology

Abdulnasser Alhajeri, MD
Edward J. Escott, MD
June Kim, MD
Douglas E. Lukins, MD
Kwaku K. Obeng, MD
Flavius D. Raslau, MD

Nuclear Medicine & Molecular Imaging

Gary R. Conrad, MD, MBA
Riham El Khouli, MD
M. Elizabeth Oates, MD

Pediatric Radiology

Kimberly E. Applegate, MD, MS,
FACR, FSCBTMR
Johanne E. Dillon, MD

Vascular and Interventional Radiology

Gaby E. Gabriel, MD
Steven J. Krohmer, MD
Driss Raissi, MD

Women's Radiology

Richard D. Gibbs, MD
Wendi A. B. Owen, MD
Paul J. Spicer, MD
Margaret M. Szabunio, MD
Xiaoqin "Jennifer" Wang, MD

CLINIC LOCATIONS

Comprehensive Breast Care Center

Markey Cancer Center
Whitney-Hendrickson Building
Second Floor
800 Rose St.
Lexington KY 40536-0293
Call 859-323-2222 or 866-340-4488
Fax 859-323-6109

Diagnostic Technologies: Diagnostic Mammography, Tomosynthesis, US

Gill Imaging Center

Gill Heart and Vascular Institute
Ground Floor, G100
1000 S. Limestone
Lexington KY 40536-0602
Call 859-323-9729
Fax 859-257-8699

Diagnostic Technologies: CT, MRI, X-ray

Kentucky Clinic

First Floor, C115
740 S. Limestone
Lexington KY 40536
Call 859-323-9729
Fax 859-257-1969
Diagnostic Technologies: DEXA/DXA, MRI, X-ray

UK Good Samaritan Professional Arts Center

First Floor
135 E. Maxwell St.
Lexington KY 40508
Call 859-226-7200
Diagnostic Technologies: MRI, X-ray

UK HealthCare at Turfland

2195 Harrodsburg Road, Suite 125
Lexington KY 40504
Call 859-218-3131 or 800-333-8874
Fax 859-323-2255
Diagnostic Technologies: X-Ray

UK Polk-Dalton Clinic

217 Elm Tree Lane
Lexington KY 40507-2117
Call 859-257-8801
Fax 859-257-7322
Diagnostic Technologies: X-ray

HOSPITAL LOCATIONS

UK Chandler Hospital - Pavilion A

Ground, First, Second and Third Floors
800 Rose St.
Lexington KY 40536-0293
Call 859-323-9977
Fax 859-323-1224 or 859-257-4827
Diagnostic Technologies: CT, MRI, NM, PET/CT, US, Fluoroscopy/X-ray*
**PET/CT is located in a Mobile Treatment Center next to the Whitney-Hendrickson Building on the UK Chandler Hospital campus.*

UK HealthCare

Good Samaritan Hospital

Second Floor
310 S. Limestone
Lexington KY 40508-3008
Call 859-226-7010 or 859-323-9729
Diagnostic Technologies: CT, NM, US, Fluoroscopy/X-ray

MAILING ADDRESS

College of Medicine
Department of Radiology
UK Chandler Hospital, HX307
800 Rose St.
Lexington KY 40536-0293

