

KENTUCKY NEUROSCIENCE INSTITUTE

PHYSICIAN REFERRAL

Call UK•MDs 800-888-5533

Fax 859-257-6325

CLINIC LOCATIONS

Kentucky Neuroscience Institute

Kentucky Clinic
First Floor, Wing C, B101
740 S. Limestone
Lexington KY 40536-0284
Call 859-323-5661
Fax 859-323-1127

Neurosurgery Outreach Clinics

Harrison Memorial Hospital

1210 KY Highway 36 E.
Cynthiana KY 41031
Call 866-940-4938

St. Claire Regional Outpatient Center

1028 E. Main St.
Morehead KY 40351
Call 606-783-6500

Neurology and Neurosurgery Outreach Clinic

Rockcastle Regional Hospital and Respiratory Care Center

Medical Arts Building
140 Newcomb Ave.
Mt. Vernon KY 40456
Call 866-940-4938

MAILING ADDRESS

Kentucky Neuroscience Institute
Kentucky Clinic
First Floor, Wing C
740 S. Limestone
Lexington KY 40536



The Kentucky Neuroscience Institute (KNI) integrates the expertise of the University of Kentucky's neurology and neurosurgery physicians and researchers. KNI is a regional referral center dedicated to providing comprehensive care to our patients. Physicians and scientists from both disciplines work collaboratively to find the causes and design new treatments for stroke, epilepsy, amyotrophic lateral sclerosis, Alzheimer's disease and brain tumors. They also work to provide state-of-the-art treatments for degenerative spinal disorders and spinal cord injuries.

SPECIALTIES

- ALS (Lou Gehrig's Disease)
- Aneurysms
- Child neurological disorders
- Cognitive disorders
- Concussion
- Epilepsy
- Headache and pain
 - Botulinum treatment
- Memory disorders (Alzheimer's disease)
- Movement disorders (Parkinson's disease)
- Multiple sclerosis
- Muscular dystrophy
- Myasthenia gravis
- Neuro-infectious diseases (AIDS)
- Neurogenetics
- Neuromuscular disorders
- Neuro-oncology
- Neuro-ophthalmology
- Neuropathy
- Neuropsychology
- Neurotoxicology
- Physical medicine and rehabilitation
- Pituitary and skull base disorders
- Post-polio syndrome
- Spine disorders
- Stroke

SERVICES

- Comprehensive Epilepsy Program
- Gamma Knife® Radiosurgery Center
- Neurology
- Neurosurgery
- Pediatric Neuroscience Program
- UK Comprehensive Stroke Center



KENTUCKY NEUROSCIENCE INSTITUTE

► COMPREHENSIVE EPILEPSY PROGRAM

PATIENT APPOINTMENTS

Call 859-323-5661

CLINIC LOCATION/ MAILING ADDRESS

Kentucky Neuroscience Institute
Kentucky Clinic
First Floor, Wing C
740 S. Limestone
Lexington KY 40536-0284
Call 859-323-5661
Fax 859-323-1127

MERIEM K. BENSALEM-OWEN, MD, FANA, FACNS

Director

In 2006, the Kentucky Neuroscience Institute was designated as the region's only Level IV Epilepsy Center by the National Association of Epilepsy Centers because of our commitment to advanced patient care. Working together, our comprehensive team of neurologists and neurosurgeons provide the latest treatment and surgical options. The Comprehensive Epilepsy Program's services include diagnostic testing and the latest treatments for the management of all forms of epilepsy in children and adults. We offer outpatient services as well as inpatient care in the adult epilepsy monitoring unit (EMU) at UK Chandler Hospital and the pediatric EMU in the Kentucky Children's Hospital.

SPECIALTIES

- Brain imaging such as functional MRI mapping
- Caring for women with epilepsy during their reproductive years, including high-risk pregnancies
- Intraoperative monitoring and awake craniotomy
- New onset seizures
- Noninvasive medical options and ketogenic diet
- Pediatric epilepsy
- Refractory (difficult to control) seizures
- Surgical interventions (lobectomy, lesionectomy, hemispherectomy, corpus callosotomy, subpial transections and vagus nerve stimulation)
- Video-EEG monitoring of critically ill patients
- Other new, innovative treatment options

PHYSICIANS

Neurology

Meriem K. Bensalem-Owen, MD,
FANA, FACNS
Frank G. Gilliam Jr., MD
Dong "Dan" Y. Han, PsyD
Amy B. Hessler, DO
Siddharth Kapoor, MD
G. Qutubuddin Khan, MD
Zabeen K. Mahuwala, MD
Sally V. Mathias, MD
Stephen J. Ryan, MD
Frederick A. Schmitt, PhD

Neurosurgery

Abdulnasser Alhajeri, MD
Thomas A. Pittman, MD

KENTUCKY NEUROSCIENCE INSTITUTE

▶ GAMMA KNIFE® RADIOSURGERY CENTER

PATIENT APPOINTMENTS

Call 859-323-8986

Fax 859-257-1532

CLINIC LOCATION/ MAILING ADDRESS

Markey Cancer Center

Ben F. Roach Cancer Care Facility
Lower Level
800 Rose St.
Lexington KY 40536-0084
Call 859-257-7712
Fax 859-323-3074

PHYSICIANS

Ronald C. McGarry, MD, PhD
Thomas A. Pittman, MD
William H. St. Clair, MD, PhD

WILLIAM H. ST. CLAIR, MD, PHD THOMAS A. PITTMAN, MD

Medical Directors

At UK HealthCare, we are committed to improving the lives and health of patients using the most advanced health care techniques. Gamma Knife® Radiosurgery Center is a perfect example. With Gamma Knife® radiosurgery, our neuroscience team can treat neurological disorders and diseases without invasive surgery. Many cancer types and some non-cancer disorders can be considered for this high precision treatment approach.

Gamma Knife®'s cutting-edge technology allows some patients to avoid the risks of traditional surgery as well as an extended hospital stay. Patients can return to the same level of activity they're used to within 24 hours of Gamma Knife® surgery. Our goal is to return patients to a normal, healthy life as quickly as possible and Gamma Knife®'s non-invasive surgery makes that possible.

Thomas A. Pittman, MD evaluates all patients referred for Gamma Knife® before treatment is scheduled.

Hours: Monday - Friday, 7 a.m. - 5 p.m.



KENTUCKY NEUROSCIENCE INSTITUTE

► NEUROLOGY

PATIENT APPOINTMENTS

Call 859-323-5661

Fax 859-323-3753

CLINIC LOCATIONS

Kentucky Neuroscience Institute

Kentucky Clinic

First Floor, Wing C, Room B101

740 S. Limestone

Lexington KY 40536

Call 859-323-5661

Fax 859-323-3753

Rockcastle Regional Hospital and Respiratory Care Center

Medical Arts Building

140 Newcomb Ave.

Mt. Vernon KY 40456

Call 866-940-4938

MAILING ADDRESS

Kentucky Neuroscience Institute

First Floor, Wing C, L445

740 S. Limestone

Lexington KY 40536-0284

LARRY B. GOLDSTEIN, MD

Chair

The Department of Neurology provides diagnostic evaluation and treatment of complex neurological and neuromuscular diseases related to the central and peripheral nervous systems (brain, spinal cord and all extremities) such as Alzheimer's disease and other memory disorder, epilepsy, Parkinson's disease and other movement disorders, multiple sclerosis, ALS (Lou Gehrig's disease), brain tumors, stroke and headache. As part of the multidisciplinary team at the Kentucky Neuroscience Institute, our neurology specialists work directly with neurosurgeons for those patients requiring surgical interventions.

SPECIALTIES

- Alzheimer's disease and other dementias
- Brain tumors
- Cerebrovascular disorders (stroke)
- Dystonias
- Epilepsy and related disorders
- Headache and pain
- Movement disorders, including Huntington's disease, Parkinson's disease and related syndromes, spinocerebellar ataxias, Tourette's syndrome and dystonia
- Multiple sclerosis and other demyelinating diseases
- Neurologic and behavioral disorders of childhood
- Neuromuscular disorders, including amyotrophic lateral sclerosis (ALS), Guillain-Barré syndrome, muscular dystrophy, myasthenia gravis, peripheral neuropathies and polio/post-polio syndrome
- Sleep disorders
- Stroke
- Vertigo

CLINICS

- Botulinum Treatment
- Cerebrovascular Disorders
- Child Neuro-oncology
- Comprehensive Epilepsy
- General and subspecialty child neurology
- Headache and Pain
- Memory Disorders
- Motor Neuron Disease
- Multiple Sclerosis
- Myasthenia Gravis
- Neuro-infectious Disease
- Neurogenetics
- Neuromuscular
- Neuro-oncology
- Neuropathy
- Post-polio
- Regional child neurology clinics

► NEUROLOGY

REGIONAL CHILD NEUROLOGY CLINICS

The Department of Neurology, in conjunction with the Kentucky Commission for Children with Special Health Care Needs, evaluates and treats patients in Eastern Kentucky under age 21 with a wide variety of neurological problems. The Regional Clinics are held twice monthly in eight Eastern Kentucky counties. The county location of these clinics is listed below along with the appropriate phone number for making an appointment. Clinics are available to any child in the region and are not limited to children from the

specific county. Clinics are held in Boyd, Clay, Fayette, Floyd, Knox, Perry, Rowan and Pike counties.

Ashland: 800-928-3049
 Barbourville/Manchester: 800-348-4279
 Hazard: 800-378-3357
 Lexington: 859-252-2689
 Morehead: 800-928-3049
 Prestonsburg/Pikeville: 800-594-7058
 Somerset: 606-677-4120

PHYSICIANS

Botulinum Program

Michael R. Dobbs, MD, MHCM
 Siddharth Kapoor, MD
 Stephen J. Ryan, MD

Child Neurology

Robert J. Baumann, MD
 Kimberly S. Jones, MD
 G. Qutubuddin Khan, MD
 Donita D. Lightner, MD
 William C. Robertson Jr., MD

Comprehensive Epilepsy Program

Meriem K. Bensalem-Owen, MD,
 FANA, FACNS
 Frank G. Gilliam Jr., MD
 Dong “Dan” Y. Han, PsyD
 Amy B. Hessler, DO
 Siddharth Kapoor, MD
 G. Qutubuddin Khan, MD
 Zabeen K. Mahuwala, MD
 Sally V. Mathias, MD
 Stephen J. Ryan, MD
 Frederick A. Schmitt, PhD
Headache and Pain
 Robert J. Baumann, MD
 Dong “Dan” Y. Han, PsyD
 Amy B. Hessler, DO
 Siddharth Kapoor, MD
 Jonathan H. Smith, MD

Memory and Aging Program

Gregory A. Jicha, MD, PhD
 Frederick A. Schmitt, PhD
 Charles D. Smith, MD

Movement Disorders

Michael R. Dobbs, MD, MHCM
 John T. Slevin, MD, MBA, FAAN
 Tritia R. Yamasaki, MD, PhD

Multidisciplinary Concussion Program

Dong “Dan” Y. Han, PsyD
 Amy B. Hessler, DO
 Kara Ann Kennedy, DO
 Richard Ronan Murphy, MD
 Frederick A. Schmitt, PhD
 Jonathan H. Smith, MD
 William D. Watson, MD

Multiple Sclerosis

Joshua J. Chalkley, DO, MS
Neuromuscular Disorders
 Edward J. Kasarskis, MD, PhD
 Zabeen K. Mahuwala, MD
 Kevin R. Nelson, MD
 Stephen J. Ryan, MD

Neuro-oncology

Donita D. Lightner, MD

Neuro-ophthalmology

Padmaja Sudhakar, MD

Neuropsychology

Dong “Dan” Y. Han, PsyD
 Frederick A. Schmitt, PhD

Neurorehabilitation

Kara Ann Kennedy, DO

Neurotoxicology

Michael R. Dobbs, MD, MHCM

Stroke and Cerebrovascular Disorders

Ayman A. Al-Salaimeh, MD
 Michael R. Dobbs, MD, MHCM
 Larry B. Goldstein, MD
 Dong “Dan” Y. Han, PsyD
 Gregory A. Jicha, MD, PhD
 Kara Ann Kennedy, DO
 Jessica D. Lee, MD
 Jessica M. McFarlin, MD
 Richard Ronan Murphy, MD
 L. Creed Pettigrew Jr., MD, MPH
 Danny R. Rose Jr., MD
 Stephen J. Ryan, MD

KENTUCKY NEUROSCIENCE INSTITUTE

► NEUROSURGERY

PHYSICIAN REFERRAL

Call UK•MDs 800-888-5533
Fax 859-257-6325

PHYSICIAN APPOINTMENT NUMBERS

Abdulnasser Alhajeri, MD
Call 859-257-5009
Justin F. Fraser, MD
Call 859-257-5009
Stephen L. Grupke, MD
Call 859-257-5009
Thomas A. Pittman, MD
Call 859-323-5661
Phillip A. Tibbs, MD
Call 859-323-6597
Craig G. van Horne, MD, PhD
Call 859-323-1334
Raul A. Vasquez, MD
Call 859-323-5661
Greg R. Wheeler, MD
Call 859-323-5661

PHILLIP A. TIBBS, MD

Chair

The Department of Neurosurgery provides diagnosis and management of a wide spectrum of neuro surgical conditions involving the brain, spine and nervous system. We offer treatments for cerebral aneurysms, carotid stenosis, stroke, intervertebral disc herniation, brain and spinal cord tumors, peripheral nerve entrapment, hydrocephalus, myelomeningocele, spasticity and intractable epilepsy. We also offer stereotactic surgery, spinal fixation for trauma or metastasis, microsurgery, laser surgery, interstitial radiotherapy, chemotherapy and Gamma Knife® radiosurgery.

We are comprised of a highly experienced team of surgeons that can treat children and adults. Our team of world-renowned neurosurgeons uses the most advanced surgical techniques to treat brain diseases and disorders. The Kentucky Neuroscience Institute neurosurgeons work with a team of neurological specialists to treat complex and devastating disorders and diseases such as stroke, ALS, epilepsy and spine disorders. UK is on the cutting edge of patient care and is taking the next step by putting the power of an entire team of specialists to work on your condition.

SPECIALTIES

- Back pain
- Brain and spinal cord injury
- Brain tumors
- Carotid vascular disease
- Cerebral aneurysms
- Craniofacial surgery
- Epilepsy surgery
- Gamma Knife® radiosurgery
- Head injuries
- Laser surgery
- Lumbar and cervical disc disease
- Microsurgery
- Movement disorders
- Neuro-oncology
- Orbital tumors
- Pain surgery
- Pediatric neurosurgery
- Peripheral nerve surgery
- Pituitary tumors
- Spinal reconstruction
- Spinal tumors
- Stereotactic surgery
- Stroke

KENTUCKY NEUROSCIENCE INSTITUTE

► NEUROSURGERY

CLINIC LOCATIONS

Kentucky Neuroscience Institute

Kentucky Clinic
First Floor, Wing C, Room B101
740 S. Limestone
Lexington KY 40536
Call 859-323-5661
Fax 859-323-1127

UK HealthCare - Georgetown

Landmark Office Complex
202 Bevins Lane
Georgetown KY 40324
Call 859-323-5661

Harrison Memorial Hospital

1210 Kentucky Hwy 36E
Cynthiana KY 41031
Call 866-940-4938

Rockcastle Regional Hospital and Respiratory Care Center

Medical Arts Building
140 Newcomb Ave.
Mt. Vernon KY 40456
Call 866-940-4938

St. Claire Regional Outpatient Center

1028 E. Main St.
Morehead KY 40351
Call 606-783-6500

MAILING ADDRESS

Department of Neurosurgery
UK Chandler Hospital, MS101
800 Rose St.
Lexington KY 40536-0293

PHYSICIANS

Aneurysms and Arteriovenous Disease

Abdulnasser Alhajeri, MD
Justin F. Fraser, MD
Stephen L. Grupke, MD

Comprehensive Epilepsy Program

Abdulnasser Alhajeri, MD
Thomas A. Pittman, MD

Movement Disorders

Craig G. van Horne, MD, PhD

Neuro-oncology

Thomas A. Pittman, MD

Pituitary and Skull Base Disorders

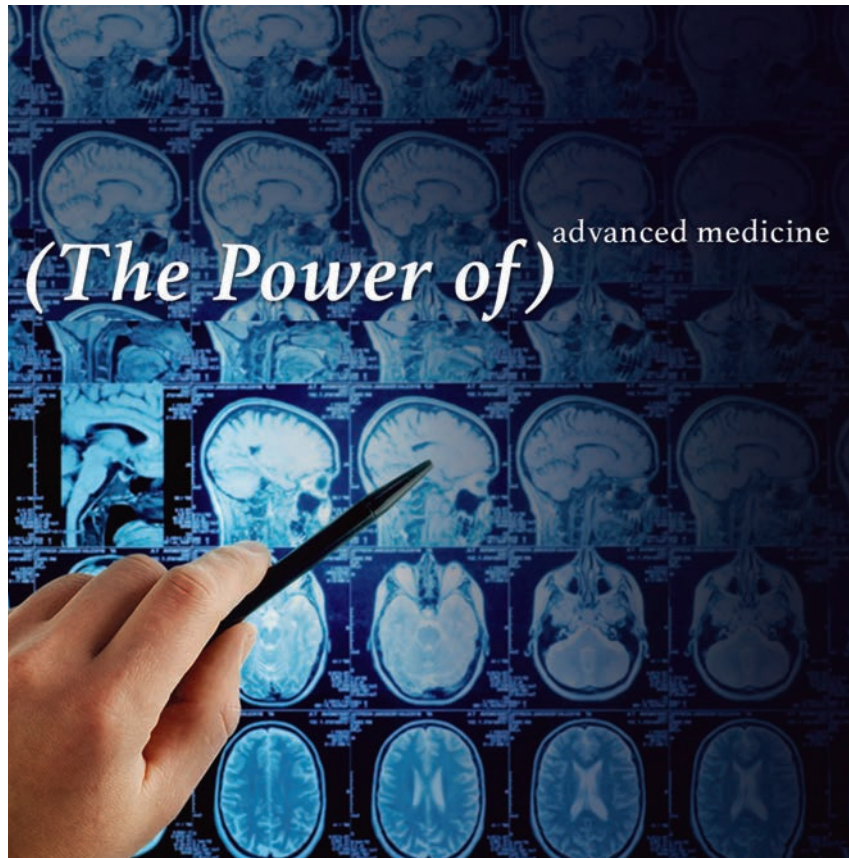
Justin F. Fraser, MD
Stephen L. Grupke, MD

Spine Surgery

Phillip A. Tibbs, MD
Craig G. van Horne, MD, PhD
Raul A. Vasquez, MD
Greg R. Wheeler, MD

Stroke and Cerebrovascular Disorders

Abdulnasser Alhajeri, MD
Justin F. Fraser, MD
Stephen L. Grupke, MD



KENTUCKY NEUROSCIENCE INSTITUTE

► PEDIATRIC NEUROSCIENCE PROGRAM

PHYSICIAN REFERRAL

Call UK•MDs 800-888-5533

Fax 859-257-6325

CLINIC LOCATION/ MAILING ADDRESS

Kentucky Neuroscience Institute

Kentucky Clinic

First Floor, Wing C, Room B101

740 S. Limestone

Lexington KY 40536-0284

Call 859-323-5661

Fax 859-323-3753

ROBERT J. BAUMANN, MD

Chief, Division of Pediatric Neurology

PHILLIP A. TIBBS, MD

Chair, Department of Neurosurgery

Since 1967, pediatric neurologists and neurosurgeons at the Kentucky Neuroscience Institute have been serving the families of Kentucky through direct patient care and research. We bring a unique combination of neuroscience and pediatric expertise to our patients. Our multidisciplinary team sees out-patients in the Kentucky Clinic. For our in-patients, we utilize the Kentucky Children's Hospital where our facilities include three dedicated video EEG rooms.

We offer a multidisciplinary clinic with our fellowship-trained pediatric neurosurgeon and pediatric neuro-oncologist for children with suspected or diagnosed brain tumors. Additionally, we have a clinic for the related disorders of tuberous sclerosis and neurofibromatosis. Our pediatric epilepsy program offers a special clinic for children with difficult to control epilepsy. In addition to a neuromuscular disorder clinic, we treat other common disorders including cerebral palsy, migraine and stroke.

We use MRI, routine EEG and video EEG monitoring to decide whether spells are epileptic and to determine best treatment. We offer the full range of treatments for epilepsy including standard and experimental anticonvulsants, epilepsy surgery, vagus nerve stimulation, and the ketogenic diet. Our specialists also visit the Appalachian counties of Eastern Kentucky where clinics are held in conjunction with the Commission for Children with Special Health Care Needs (CCSHCN) to make sure every child with a neurological disorder receives the treatment they need. We also offer telemedicine capabilities for patients and have experience in telemedicine.

PHYSICIANS

Neurology

Robert J. Baumann, MD

Kimberly S. Jones, MD

G. Qutubuddin Khan, MD

Donita D. Lightner, MD

William C. Robertson Jr., MD

Neurosurgery

Thomas A. Pittman, MD

KENTUCKY NEUROSCIENCE INSTITUTE

► UK COMPREHENSIVE STROKE CENTER

PHYSICIAN REFERRAL

Call UK•MDs 800-888-5533

Fax 859-257-6325

PATIENT APPOINTMENTS

859-323-5661

CLINIC LOCATION

Kentucky Neuroscience Institute

Kentucky Clinic
First Floor, Wing C
740 S. Limestone
Lexington KY 40536-0284
Call 859-323-5661
Fax 859-323-1127

PHYSICIANS

Neurology

Ayman A. Al-Salaimeh, MD
Michael R. Dobbs, MD, MHCM
Larry B. Goldstein, MD
Dong "Dan" Y. Han, PsyD
Gregory A. Jicha, MD, PhD
Kara Ann Kennedy, DO
Jessica D. Lee, MD
Jessica M. McFarlin, MD
Richard Ronan Murphy, MD
L. Creed Pettigrew Jr., MD, MPH
Danny R. Rose Jr., MD
Stephen J. Ryan, MD

Neurosurgery

Abdulnasser Alhajeri, MD
Justin F. Fraser, MD
Stephen L. Grupke, MD

JESSICA D. LEE, MD

Medical Director

JUSTIN F. FRASER, MD

Surgical Director

The UK Comprehensive Stroke Center is a key part of the Kentucky Neuroscience Institute. The UK Comprehensive Stroke Center is recognized as the leading center for the management of stroke, specializing in the treatment of all strokes from simple to complex. By combining nationally recognized stroke doctors and specially trained nurses and therapists with advanced medical technology, we provide our patients truly comprehensive and committed care that is second to none. The region's most experienced stroke program includes:

- Dedicated stroke neurologists
- Vascular and endovascular neurosurgeons
- Interventional neuro-radiologists
- Neuropsychologists
- Specially trained nurses and nursing care technicians
- Pharmacists
- Dietitians
- Social workers
- Physical and occupational therapists
- Speech-language pathologists
- A stroke program coordinator
- Patient care manager

Stroke Certification

Our stroke center was the first in the region to be designated as a Comprehensive Stroke Center. That certification, issued by The Joint Commission, is recognition of the hospital's specially trained physicians and staff as well as the results of its center.

Gold Plus Award



UK HealthCare's Kentucky Neuroscience Institute (KNI) has received the Get With The Guidelines - Stroke Gold-Plus Quality Achievement Award by the American Heart Association/American Stroke Association for maintaining nationally recognized standards for the treatment of stroke patients.

KENTUCKY NEUROSCIENCE INSTITUTE

► UK COMPREHENSIVE STROKE CENTER

KNI also received the association's Target: Stroke Honor Roll Elite for meeting stroke quality measures that reduce the time between hospital arrival and treatment with the clot-buster tPA, the only drug approved by the U.S. Food and Drug Administration to treat ischemic stroke. Over 12 months, at least 75 percent of the hospital's ischemic stroke patients received tPA within 60 minutes of arriving at the hospital.

This year marks the sixth year that KNI has received Gold Plus designation. KNI has been named to the Target: Stroke Honor Roll the past three years and repeats for the 'elite' level that was introduced last year.

By participating in the Get With The Guidelines - Stroke program, we are able to share our expertise with other member hospitals around the country, including access to the most up-to-date research, clinical tools and resources, and patient education resources.

Leading Edge Stroke Care

Stroke patients at the Kentucky Neuroscience Institute (KNI) have access to not only the region's top doctors, but also to the most advanced medical technology. KNI was the first health care center in the region to offer Merci® Retrieval System, a leading-edge tool for removing potentially lethal blood clots in the brain. Leading edge stroke treatments offered at UK HealthCare include: intravenous thrombolysis, intra-arterial thrombolysis, endovascular Merci® Retrieval System and clinical trials.

Stroke specialists are available 24 hours a day to treat stroke immediately, using the latest technology and clot-busting drugs to treat strokes before they can cause brain damage. UK continues to embrace innovation to benefit our patients. The Merci® device, while revolutionary for its time, has been supplanted by the Trevor and Solitaire stent-trievers, which have helped our stroke interventionalists to achieve some of the highest recanalization rates.

24-Hour Stroke Care Service

Our Stroke Team is dedicated to the immediate treatment of stroke. That's why we've set up the following services:

- 24-hour, inpatient pharmacy to deliver state-of-the-art drugs at any hour
- In-house X-Ray technologists operating a CT scanner to quickly identify bleeding strokes
- In-house neurosurgical consultation
- TPA kit in the emergency department
- Helicopter transport
- Specialized magnetic resonance scanners that can detect a stroke in the brain after no more than an hour of symptoms

Stroke ICU

The UK Stroke Center offers a dedicated 20-bed stroke unit and 12-bed stroke ICU in Pavilion A of UK Chandler Hospital. At nearly 300 square feet, every private room has zones for the patient, caregiver and family. Room around the patient's bed accommodates equipment, including a computer for in-room charting so caregivers can spend more time at the bedside, working together as a team.

Stroke Care Network

UK HealthCare and Norton Healthcare have collaborated with area hospitals to help develop the first community-based stroke program in the region. The partnership is designed to provide the highest quality care and educational programs to hospital staff as well as community members.

The relationship between the UK, Norton Healthcare and their affiliate hospitals allow patients to receive the best possible care during the early moments of a stroke, when diagnosis and administering rapid treatment are extremely important.

Each network hospital has made a strong commitment to providing current and clinically effective stroke care for the community and supports these efforts by providing clinical guidance and oversight, making sure that stroke patients receive the right treatment at the right time.

Network Hospitals

Network chapters are listed at ukhealthcare.uky.edu/kni/stroke-affiliate